



I am pleased to present the Polk County Health Department's 2006 Annual Report. Listed below are some of our significant accomplishments during the past year:

- Began a \$450,000 three year implementation grant from the *Wisconsin Partnership Fund for a Healthy Wisconsin* to institute screenings and brief clinical interventions in health care settings focusing on alcohol use
- Improved home care program patient outcomes in management of acute care hospitalization and improvement in dyspnea through quality improvement efforts
- Participated in a functional exercise to test capability around the Interim Pharmaceutical Stockpile; conducted a community tabletop exercise on pandemic flu and coordinated a community workgroup on pandemic flu preparedness planning
- Conducted a tire disposal program utilizing DHFS grant funds and county matching funds. Over 3,000 tires were collected with the overall goal being the reduction of mosquito habitat
- Received a March of Dimes grant to increase outreach to eligible pregnant women for WIC and other agency maternal child health programs



Appreciation is extended to the Board of Health, the medical community, area schools and many other allied agencies that supported and participated in community health improvement efforts in 2006.

Sincerely,

A handwritten signature in cursive script that reads "Gretchen Sampson".

Gretchen Sampson, RN MPH

Director/Health Officer

## POLK COUNTY HEALTH DEPARTMENT

### *Vision*

Healthy People, Communities And  
Environment.....Healthy Polk County

### *Mission*

Promoting, Protecting And Preserving Health  
Through Partnerships With People And  
Communities

### *Core Values*

**Relationship-Based:** Our staff is respectful,  
caring and compassionate and grounded in an  
ethic of caring with a long term commitment to our  
community

**Prevention-Based:** Our programs focus on health  
promotion and disease prevention

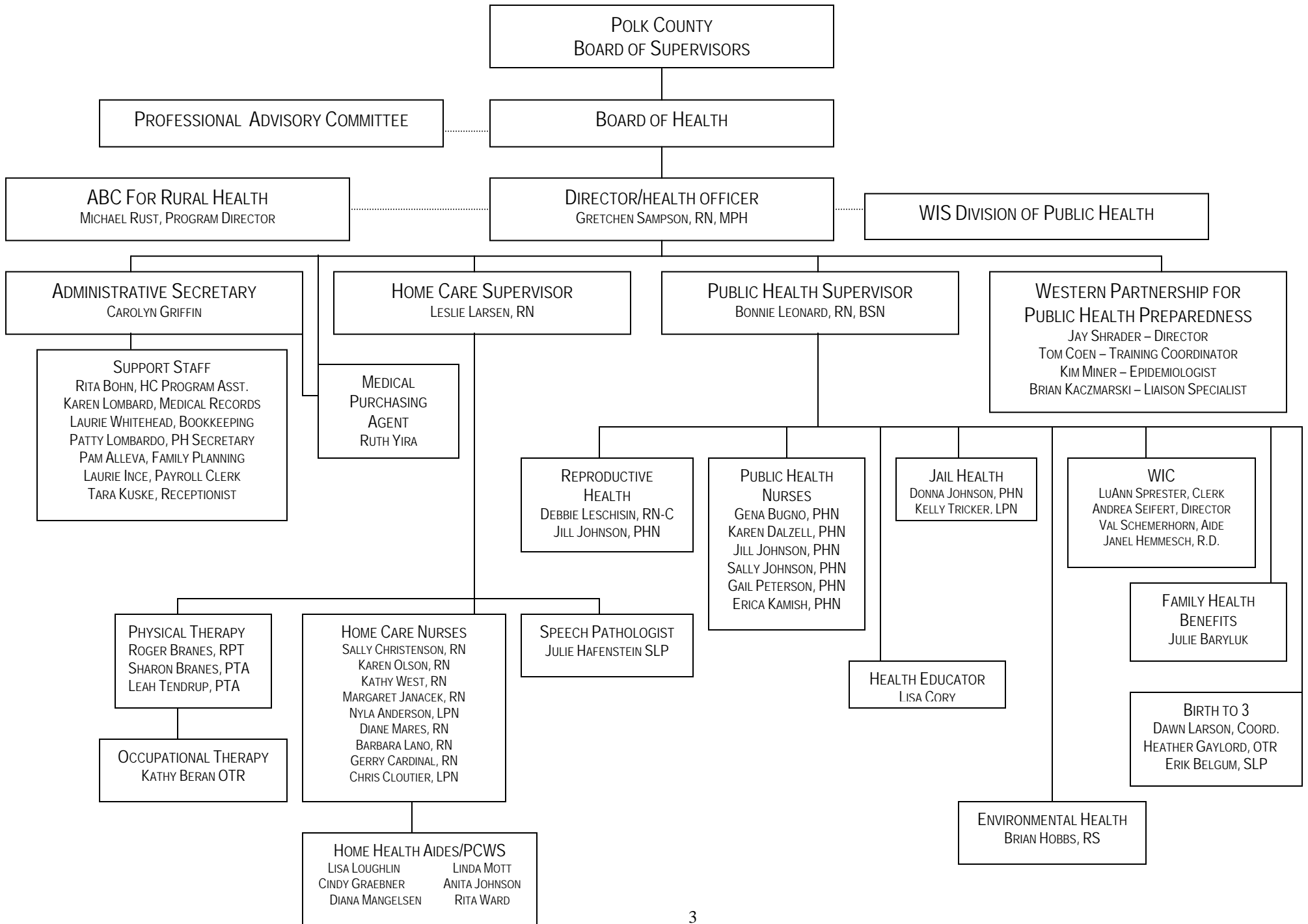
**Evidence-Based:** Our practice is science based  
and uses best practices that improve population  
health status

**Social Justice:** We are advocates for vulnerable  
populations and work to empower families to  
assure optimal quality of life

**Responsive:** We provide leadership on health  
related issues and concerns expressed by the  
community, by population data and by the Board  
of Health

**Effective, Efficient, Sustainable:**  
We strive to deliver services in a cost effective and  
efficient manner that address the health priorities  
of our community and last over time

**POLK COUNTY HEALTH DEPARTMENT ORGANIZATIONAL CHART – DECEMBER, 2006**



# Governing and Advisory Committees

## **Polk County Board of Health**

William Hughes, Chair  
Neil Johnson  
Tom Nilssen  
Diane Stoneking  
Wanda Johnson RN  
Arne Lagus MD  
Rick Scoglio

## **Agency Professional Advisory Committee**

Martin Rimestad MD, Chair  
Matt Johnson RPH  
Craig Johnson, MD  
Arne Lagus MD  
Richard Huset MD  
Kristen Stevens MD  
Paul Sletten MD  
Rick Scoglio BS  
Judy Karlson BSN  
Mary Nedlund RN MPH  
Gretchen Sampson RN MPH  
Bonnie Leonard RN BSN  
Leslie Larsen RN

## **HEALTH DEPARTMENT STAFF SERVING ON LOCAL ADVISORY COMMITTEES & ORGANIZATIONS**

Polk County Youth Enrichment Partnership - Gretchen Sampson, Lisa Cory  
Northwoods Homeless Shelter Board - Julie Baryluk, Secretary  
The Haven Board of Directors; Interfaith Caregivers - Leslie Larsen, Vice-Chair  
American Cancer Society, Polk County - Gena Bugno  
Polk County LEPC (Local Emergency Planning Committee) – Bonnie Leonard, Jay Shrader  
Polk County Highway Safety Committee - Gail Peterson  
Polk County Family Provider Network– Dawn Larson  
Polk County Safety Committee – Ruth Yira  
Polk County Long-Term Support Committee - Leslie Larsen  
Child Advocacy Referral Interagency Networking Group (CARING) - Dawn Larson  
Polk County Child Abuse Blue Ribbon Committee – Dawn Larson  
Polk County Transportation Corporation - Leslie Larsen  
Polk County Tobacco Free Coalition – Lisa Cory, Jay Shrader, Sally Johnson, Laurie Whitehead, Kim Miner  
Polk County Breast Feeding Coalition - Andrea Seifert  
Polk County Family Preservation Workgroup - Gretchen Sampson  
Blessing Way Family Services Board of Directors – Andrea Seifert  
Polk County Elder Abuse Interdisciplinary Team – Leslie Larsen, Chair  
Polk County HIPAA Team – Leslie Larsen  
Polk County HealthWatch Coalition – Julie Baryluk, Gretchen Sampson, Bonnie Leonard, Brian Hobbs, Lisa Cory  
Polk County Nutrition Coalition – Andrea Seifert, Co-Chair, Janel Hemmesch, Sally Johnson  
Meth Advisory Committee – Bonnie Leonard  
CESA #11 Head Start Health Advisory Council – Gail Peterson

## **HEALTH DEPARTMENT STAFF SERVING ON REGIONAL AND STATE ADVISORY COMMITTEES & ORGANIZATIONS**

Western Wisconsin Public Health Education Consortium - Leslie Larsen, Gretchen Sampson (Chair)  
Western Wisconsin Nutrition Network – Andrea Seifert  
Wisconsin Public Health Association Board of Directors – Gretchen Sampson, Immediate Past President;  
Jay Shrader, Chair - Membership Committee  
Wisconsin Home Care Association Board of Directors – Leslie Larsen, Immediate Past President  
Annual Statewide Public Health Nursing Conference Planning Committee – Gretchen Sampson (Chair)  
Western Region Public Health Nursing Supervisor’s Group – Leslie Larsen, Vice Chair  
WI Partnership for Activity and Nutrition (WIPAN) Environmental Committee/Nutrition Subcommittee – Janel Hemmesch  
Wisconsin WIC Nutrition Counseling Workgroup; WIC Advisory Committee; Wisconsin WIC Association – Andrea Seifert  
Healthy Wisconsin Leadership Institute Advisory Committee – Gretchen Sampson  
Wisconsin EdTRAC Committee– Jay Shrader  
Wisconsin Alliance for Drug Endangered Children – Bonnie Leonard  
Wisconsin Family Planning & Reproductive Health Association Board of Directors – Debbie Leschisin (also serves on Education Committee)

## **Health Department Staff Participating in Special Projects**

National Environmental Public Health Leadership Institute – Brian Hobbs



# 2005 Natality Health Status Profile

	<u>Polk County</u>		<u>Wisconsin</u>
<b>Total Estimated Population</b>	44,329		5,536,201
	<u>Number</u>	<u>Rate/1000</u>	<u>Rate/1000</u>
<b>Total Live Births</b>	506	--	--
Crude Live Birth Rate	--	11.3	12.7
General Fertility Rate	--	60.4	61.2
Teen Birth Rate	--	22.2	30.5
<b><u>Data Element</u></b>	<b><u>Number</u></b>	<b><u>Percent</u></b>	<b><u>Percent</u></b>
<b><i>Low Birthweight Infants</i></b>			
Less than 1,500 gm	10	2.0	1.3
1,500-2,499 gm	27	5.3	5.7
Total	37	7.3	7.0
<b><i>Trimester of 1st Prenatal Visit</i></b>			
1st trimester	425	84.0	85.0
2nd trimester	64	12.6	11.5
3rd trimester or none	7	1.4	2.2
No Care	3	0.6	1.3
Unknown	7	1.4	-
<b><i>Age of Mother</i></b>			
Less than 15	0	0	0.1
15-17	8	1.6	2.5
18-19	27	5.3	6.0
20-24	132	26.1	23.2
25-29	174	34.4	30.0
30-34	119	23.5	24.5
35-39	36	7.1	11.4
40-44	10	2.0	2.2
45+	0	0	0.1
<b><i>Other Characteristics of Mother</i></b>			
Less than High School Education	42	8.3	15.3
Smoked While Pregnant (2004 data)	95	19.0	14.0
Unmarried	149	29.4	32.8

# 2005 Health Status Profile For Polk County Residents

## *MORTALITY*

	<u>Polk County</u>		<u>Wisconsin</u>
	<u>Number</u>	<u>Crude Rate/1,000</u>	<u>Crude Rate/1,000</u>
<b>Total Deaths</b>	401	9.0	8.1
<u>Leading Underlying Causes of Death<sup>1</sup></u>	<u>Number</u>	<u>Crude Rate/100,000</u>	<u>Crude Rate/100,000</u>
Malignant Neoplasms (total)	108	243.6	195.5
Diseases of the Heart	98	221.1	211.0
Chronic Lower Respiratory Disease	28	63.2	43.7
Cerebrovascular Disease	23	49.6	52.9
Diabetes	14	31.6	22.8
Alzheimer's	12	27.1	27.1
Motor Vehicle Accidents	8	18.0	14.3

### *MOTOR VEHICLE CRASHES<sup>2</sup>*

Type of Motor Vehicle Crash	Number Crashes		Persons Injured				Persons Killed			
	Polk	Wis	Polk	%	Wis	%	Polk	%	Wis	%
<b>Alcohol Related</b>	92	8,768	54	58.7	5,992	68.3	1	1.1	326	3.7
<b>Speeding Related</b>	166	23,514	113	68.1	11,349	48.3	1	0.6	269	1.1
<b>Motorcyclist</b>	21	2,660	19	90.0	2,277	85.6	1	4.8	91	3.4
<b>Bicyclist</b>	1	1,154	1	100.0	1,105	95.8	0	0.0	14	1.2
<b>Pedestrian</b>	3	1,399	3	100.0	1,325	94.7	0	0.0	42	3.0
<b>Totals<sup>3</sup></b>	<b>594</b>	<b>125,174</b>	<b>220</b>	<b>37.0</b>	<b>53,462</b>	<b>42.7</b>	<b>5</b>	<b>0.8</b>	<b>801</b>	<b>0.6</b>

<sup>1</sup> Wisconsin Deaths 2005: Bureau of Health Information and Policy; Division of Public Health, WI DHFS

<sup>2</sup> 2005 Wisconsin Traffic Crashes: Wisconsin Dept. of Transportation

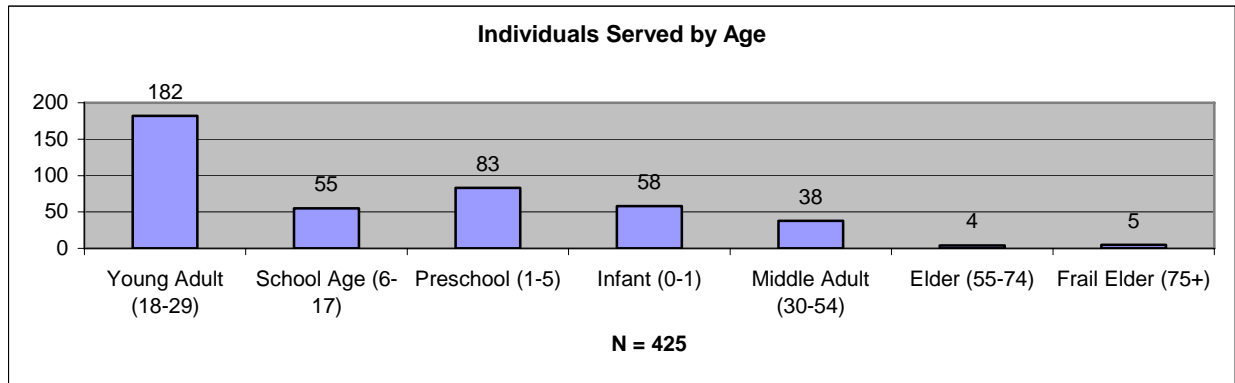
<sup>3</sup> Totals including numbers and percentages include other types of crash data not reflected in this table.

# PUBLIC HEALTH NURSING

## Healthy People 2010 Objective

- Increase the proportion of persons appropriately counseled about health behaviors

Public Health Nurses provide health promotion, education, and health counseling in the home along with supervision of stable conditions.



## 2006 PHN Visits by Health Condition

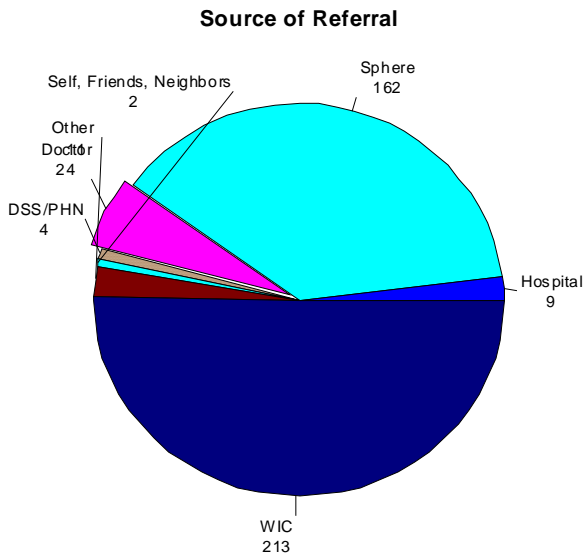
	2006	2005	2004
<b>Unduplicated Clients</b>	425	329	290
<b>Visits*</b>	3390	2951	2906
<b>Discharges</b>	196	181	161
<b>Visits per Client</b>	8.0	9.0	10.0

\*includes PNCC, MCH, CSHCN, General PHN

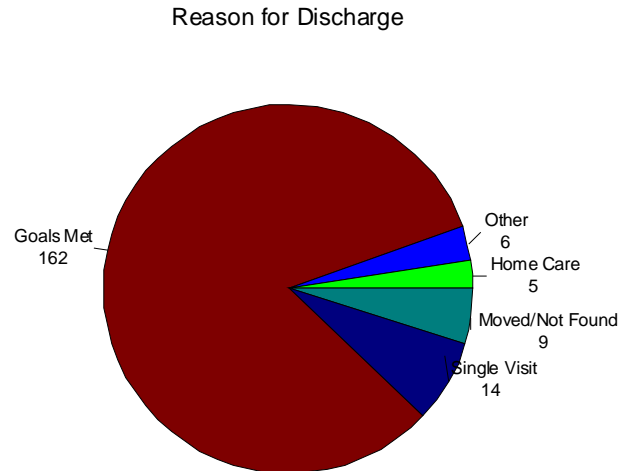
This data reflects people who were served in the home, office visits or worksite.

Health Condition	Number of Visits		
	2006	2005	2004
Prenatal	2561	2323	2185
Postpartum	11	21	30
Infant-Child	429	131	150
Respiratory	11	31	11
Mental Health	0	14	4
Infectious	10	4	21
Nervous System	0	0	0
Circulatory	19	25	22
Other	2	4	3
Musculoskeletal	157	151	139
General Health Promotion	48	66	74
Endocrine	10	13	9
Neoplasms	0	0	0
Children with Special Health Care Needs	132	168	258

# PUBLIC HEALTH NURSING ADMISSION/DISCHARGE INFORMATION



N=329



N=181

## PHN Visits By Age Group

Age Group	2006	2005	2004
Infant	276	383	231
Preschool (1-4)	103	59	64
School Age (5-17)	144	133	85
Young Adult (18-29)	2420	1982	1962
Middle Adult (30-54)	346	266	445
Elder (55-74)	78	59	24
Frail Elder (75+)	23	69	95
<b>Total</b>	<b>3390</b>	<b>2951</b>	<b>2906</b>

# ENVIRONMENTAL HEALTH SERVICES

## Healthy 2010 Goal

- Promote health for all through a healthy environment

The Polk County Health Department investigates environmental health complaints. An Environmental Health Sanitarian (RS) provides this service through enforcement of the Human Health Hazard Ordinance 2-00. Below are program statistics for Polk County for 2004 - 2006.

	2006	2005	2004
Rabies Investigations	55	51	66
Animal Control Problems	19	32	24
Lead Hazard Investigations	1	0	3
Housing Investigations	73	84	65
Sewage Investigations	13	13	22
Water Quality Investigations	7	12	18
Solid Waste	0	0	3
Air Quality	13	17	15
Food/Hotel Complaints	0	0	0
Hazardous Materials	1	7	17
Methamphetamine Labs	0	0	0
Radiation Hazards	15	7	4

In 2006, 7 public beaches were monitored for fecal bacteria to assess water quality for purposes of swimmer safety. 2006 was a below normal precipitation year, which contributed to higher fecal coliform levels. No beaches were closed in 2006.

Public Beach Tested	Number of Tests Done	Results*	Abnormal
Balsam Lake	14	<10 to 360 CFU	None
Lotus Lake	12	<10 to 50 CFU	None
Half Moon	14	<10 to 250 CFU	None
Big Butternut	14	<10 to 550 CFU	One
South Twin Lake	14	<10 to 1100 CFU	Two
Bone Lake	14	<10 to 10 CFU	None
Lake O' the Dalles	15	<10 to 31 CFU	None

\*Single samples with results <400 colony forming units per 100 ml are considered within normal limits. Five samples equally spaced over a 30 day period and exceeding 200 CFU per 100 ml would indicate possible water contamination. Lake O' the Dalles monitored by DNR. Lotus and Bone Lake tested by Lake Association representatives.

# AGENT LICENSING AND INSPECTION

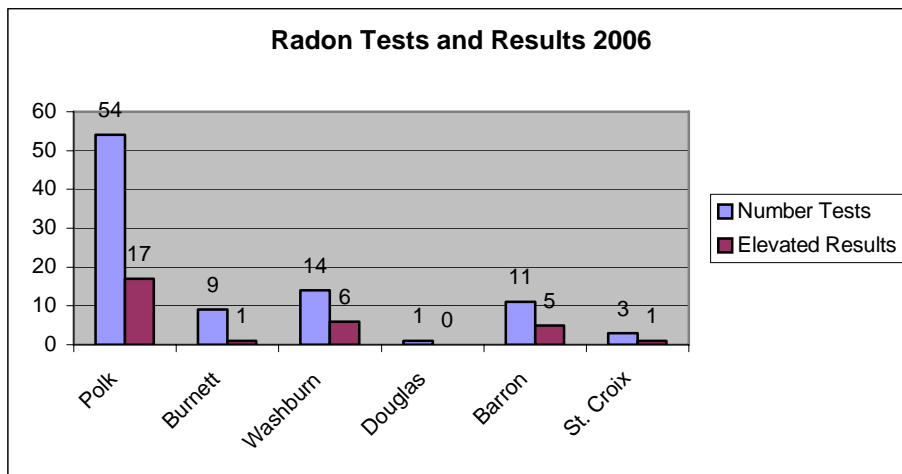
In 2002, the Polk County Health Department assumed “Agent Status” which means that licensing, inspections, and investigations of hotels, motels, restaurants, swimming pools, campgrounds, bed and breakfasts, tourist rooming houses, and schools, can be provided at the County level instead of at the State level. The goal of this program is to ensure that Polk County establishments provide a clean, safe environment for local as well as tourist patrons. Establishments receive responsive and timely services from the local Health Department.

Facility	Number of Establishments	Number of Inspections
Restaurants	170	155
Lodging	29	18
Bed and Breakfast	6	4
Tourist Rooming	16	10
Campgrounds	24	10
Swimming Pools	26	12
Recreation/Educational	5	4
Schools (Require 2 Inspections each)	20	40
Tattoo & Body Piercing	2	2
Total	298	255

Compliance orders were issued to correct violations, and follow-up inspections were done as needed. Inspections are done on a risk-based method. New in 2006, schools were required to have two inspections per DPI regulations.

# RADON INFORMATION CENTER (RIC)

Polk County Health Department is a Radon Information Center for four counties – Polk, Burnett, Washburn and Douglas. Cooperative agency efforts include distribution of test kits, assistance in analysis of test results, and mitigation information and referrals. Radon test results for 2006 are listed below.



# Lead Poisoning Prevention Program

## Healthy People 2010 Objective

- Eliminate elevated blood lead levels in children

Children participating in the WIC program receive blood lead screenings at age 1 year and again at age 2 years or older. Ideally, each child should have 2 lead tests by age 4 years. Children with elevated capillary lead levels are referred to their physician for a confirmatory venous blood lead test. Home inspections are offered to families of children whose confirmed lead levels are 15 mcg/dl or higher. Case management services were provided to the families of 3 children with elevated lead levels for ongoing lead testing and education on prevention of lead exposure. A home inspection was also completed for one of these children. One hundred ten (110) pregnant or postpartum women received an assessment for lead and other environmental hazards. Fifty-six (56) of these women lived in pre-1978 housing and received education on the impact of lead exposure and methods to limit exposure to lead hazards.

Blood Lead Level - mcg/dl *	Capillary+			Venous ++		
	2006	2005	2004	2006	2005	2004
No result	3	9	38	0	0	0
0-9	263	337	446	46	54	47
10-14	1	3	4	2	1	1
15-19	1	3	1	1	1	0
20-29	0	1	0	0	0	0
>30	0	1	1	0	0	0

\*10 or greater considered elevated. + In 2006, Polk County Health Department did 54 capillary tests; private medical clinics did 214 tests. ++ All venous lead tests were done by private medical clinics.

## HEALTH EDUCATION

### HEALTHY PEOPLE 2010 OBJECTIVE

- Increase the proportion of persons appropriately counseled about health behaviors

TOPICS	COMMUNITY SESSIONS	PERSONS ATTENDED
Substance Use Prevention	1	100
Child Abuse	5	282
Health Promotion/Disease Prevention	10	402
Public Health Preparedness	3	150
Bites/Stings	7	39
Tobacco Control	46	1838
Specific Diseases	7	36
Other Miscellaneous	86	315
<b>TOTAL</b>	<b>239</b>	<b>3162</b>

# SCHOOL NURSING

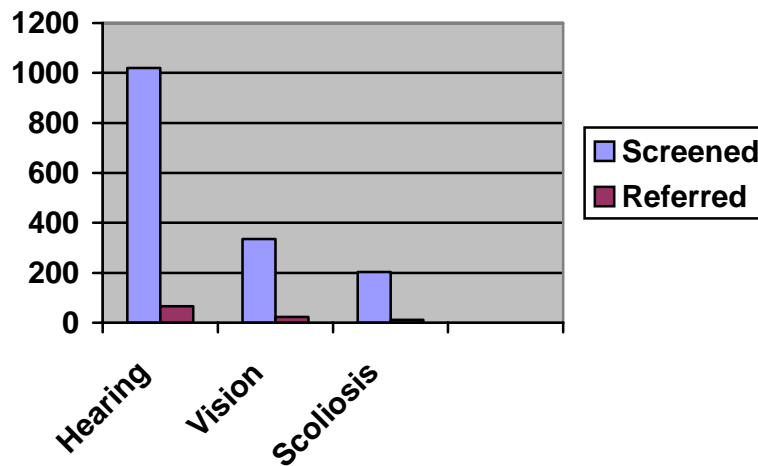


## HEALTHY PEOPLE 2010 OBJECTIVES

- Increase the proportion of persons who have had a hearing examination on schedule
- Reduce blindness and visual impairment in children and adolescents age 17 years and under
- Increase the proportion of persons appropriately counseled about health behaviors

The Health Department provides school nursing services to the eight Polk County school districts, three private schools, Polk County Special Education School and the Headstart Center. Emergency nursing, screening programs, consultation with teachers and assistance with health education is provided.

## SCHOOL YEAR SCREENING PROGRAMS 2006\*\*



\*\* School staff does original vision, hearing and scoliosis screening. This data is not reflected. The data presented is provisional as the software system has technical difficulties with reports in 2006.

## Consultation Services

GRADE	INDIVIDUAL HEALTH CONFERENCE		
	2006	2005	2004
Exceptional Ed/Early Childhood	3	10	2
Preschool & K - 5	178	170	161
Middle/Jr. High	18	24	11
High School	3	4	4
Employee	0	0	2

# Immunization Program

## Healthy People 2010 Objective

- Reduce or eliminate indigenous cases of vaccine preventable diseases

Immunizations are provided in the school setting, office, in community clinics, and in the home. Childhood vaccines are provided free from the State Division of Public Health. The Health Department works with private medical providers to assure all children receive proper immunizations. In 2006, 99% of the school-aged children in Polk County were fully immunized.

Vaccine	Number of Doses of Vaccine Administered by Age Groups in Years												
	<1	1	2	3-5	6	7-10	11-12	13-18	19-24	25-44	45-64	65+	Total
DTAP	2	11	3	30	5								51
Pediarix	20	6	2	2									30
Td						3		2	8	11	9	1	34
MMR		13	3	29	5	3	2	1		1			57
PCV7	23	14	2	2									41
Polio	2			28	3	1		1					35
Hib	17	14	3										33
Hib/HepB	1	1	1										3
HB-Ped			1	3	5		5	8					22
Varicella		13	3	8	2	3	3	11					43
Menactra								19					19
Tdap					1		10	35	8	26	28		108
Rotavirus	3												3
Hep A		5											5

## TOTAL NUMBER OF PERSONS SERVED

<b>2006</b>	2,104
<b>2005</b>	2,672
<b>2004</b>	2,189

# Birth to Three

## Healthy 2010 Objectives

- Reduce the occurrence of developmental disabilities
- Reduce the proportion of families that experience difficulties or delays in obtaining health care

## Program Statistics for 2006

Birth to Three services are provided for families with children who have a diagnosed disability, a developmental delay or a diagnosis known to result in a developmental delay. Services may begin before the child leaves the hospital after birth and may continue until the child is transitioned into other services when they turn three years old. Birth to Three services include family services coordination, special instruction, parent education, vision instruction, hearing services, assistive technology, referral to community resources and therapy services, which may include physical therapy, occupational therapy and speech/language therapy. The program staff provide screenings, evaluations and comprehensive developmental assessments to determine eligibility for the program. An individual family service plan (IFSP) is developed with the family to determine a plan for early intervention services. All children are seen in their natural environment and also have the opportunity to participate in a community playgroup.

Events the Birth to 3 Program Staff Participated in 2006 Included:

- Better Badger Baby Bus
- Early Childhood Development Days
- Family Services Provider Meetings

NUMBER OF CHILDREN REFERRED TO THE BIRTH TO THREE PROGRAM	2006	2005	2004
Children who were referred and received a home visit from a Birth to Three staff person	64	60	68
Children who were referred and whose parents declined a home visit from a Birth to Three staff person	12	14	12
<b>TOTAL</b>	<b>76</b>	<b>74</b>	<b>80</b>
Children who were referred who did not qualify or whose parents declined Birth to Three services	<b>48</b>	<b>47</b>	<b>45</b>
NUMBER OF CHILDREN WHO QUALIFIED FOR AND WERE SERVED BY BIRTH TO THREE STAFF	2006	2005	2004
Children who were referred and were enrolled in Birth to Three after meeting eligibility requirements	27	27	35
Children who were enrolled in Birth to Three the previous year and continued to receive services	28	40	30
<b>Total</b>	<b>55</b>	<b>67</b>	<b>65</b>
Number of Home Visits by Birth to Three Staff	2006	2005	2004
Initial Visit (screening or evaluation)	63	60	68
Family Service Coordination	330	469	249
Occupational Therapy	491	33	0
Special Instruction	98	176	554
Speech/Language Therapy	148	383	158
<b>Total</b>	<b>1130</b>	<b>1121</b>	<b>1029</b>

# WIC PROGRAM

## Healthy People 2010 Goal: Improve the health and well being of women, infants, children and families

The Special Supplemental Nutrition Program for Women, Infants and Children (WIC) is a federal prevention program which provides nutrition and breastfeeding education, supplemental nutritious foods, and improved healthcare access for low and moderate income women and children with, or at risk of developing nutrition related health problems. WIC promotes and supports breastfeeding. Income eligibility requirements for WIC extend to 185% of poverty. Participants must also have an identified nutrition risk factor.

<b>Program Statistics</b>	<b>2006</b>	<b>2005</b>	<b>2004</b>
Annual Unduplicated Count of WIC Participants	N/A*	1552	1452
Average monthly caseload	819	816	812
Number of Certifications	1742	1721	1766
Number of High Risk Visits	585	540	547
Number of Clinics	88	100	98
Average Number of Participants per Clinic receiving RD Counseling	29	25	24
Number Receiving Secondary Nutrition Education	1083	1051	875
Food Dollars Spent in Polk County in Year	\$480,302	\$498,944	\$506,415

<b>NUTRITION INDICATORS</b>	<b>STATE WIC GOAL</b>	<b>STATE % FOR EXCELLENT</b>	<b>State % for Needs Improvement</b>	<b>2006</b>	<b>2005</b>	<b>2004</b>
Breastfeeding Rates						
Initiation	75%	>55%	<40%	74%	67%	68%
Breastfed 1+ months	65%	>45%	<25%	73%	55%	53%
Breastfed 6+ months	50%	>25%	<10%	36%	24%	21%
Introduced formula by 1 wk	20%	<35%	>50%	N/A*	30%	29%
Using Bottle after 19 months	<5%	<10%	>30%	N/A*	14%	13%
Infant & Child hemoglobin improvement	>90%	>80%	<60%	N/A*	91.3%	65.7%
Pregnant women enrolled in 1 <sup>st</sup> trimester	>90%	>65%	<35%	N/A*	54% (of 267 enrolled)	56% (of 247 enrolled)

\* 2006 data not available

## WIC FARMERS' MARKET NUTRITION PROGRAM

**Healthy People 2010 Objective: Increase the proportion of persons aged 2 years and older who consume at least three daily servings of vegetables, with at least one-third being dark green or orange vegetables**

The WIC Farmers' Market Nutrition Program (FMNP) is a federal program that provides eligible WIC families with drafts to purchase fresh, unprocessed, Wisconsin grown produce at local farmers' markets. The purpose of the program is to increase fruit and vegetable intake of the WIC population and to increase awareness and utilization of farmers' markets. Due to federal budget cuts in 2005, the Farmer's Market draft package decreased from \$20 per family for the season to \$15.

<b>PROGRAM STATISTICS</b>	<b>2006</b>	<b>2005</b>	<b>2004</b>
Number of Families Issued Drafts	459	510	557
Dollar amount of drafts issued	\$6,885	\$7,646	\$11,140
Dollar amount redeemed	\$2,307	\$2,499	\$3,709
Redemption rate	34%	33%	33%

## WIC BREAST PUMP PROGRAM

**Healthy People 2010 Objective: Increase the proportion of mothers who breastfeed their babies.**

The Polk County WIC Program promotes breastfeeding as the preferred and normal method of infant feeding because breastfeeding has been shown to have significant advantages for women and infants. The Breast Pump Program supports a mother's breastfeeding goals by providing breast pumps to women who are experiencing difficulties with breastfeeding or have a current or expected absence from their infant, such as returning to work or school.

### Breast Pumps Issued to WIC Participants

<b>Product</b>	<b>2006</b>	<b>2005</b>	<b>2004</b>
<b>Manual Hand Pump – for occasional use</b>			
Billed to State WIC Program	0	9	2
Billed to Medicaid	2	9	11
<b>Double Electric Pump – return to school or work, long-term use</b>			
Billed to State WIC Program	8	5	5
Billed to Medicaid	46	30	30
<b>Double Electric Loan Pump – hospitalization, short-term use (pumps provided by State WIC Program)</b>			
Number loaned throughout year	28	20	24

# Community Nutrition Activities

## Healthy People 2010 Goals

- Promote health and reduce chronic disease associated with diet and weight.
- Improve health, fitness, and quality of life through daily physical activity.

## Public Health Nutritionist

The public health nutritionist position was established in 2002 to

- facilitate nutrition system and policy changes in the community
- assure nutrition expertise and leadership in programs, services and community initiatives
- assess the whole community and targeted subgroups of the population to identify priority areas for population-based nutrition intervention

	2006	2005	2004
Group Education Sessions	4	12	0
Attendance	145	373	N/A
Individual Counseling	4	1	0
Articles/Press Releases	1	4	2

## Nutrition and Physical Activity Coalition

The Nutrition and Physical Activity Coalition was established in April of 2003 to enable community members and groups to actively play a role in improving the health of the community and its citizens through nutrition and physical activity.

### ***Vision: Healthy Lifestyle, Healthy Community, Healthy Environment***

***Mission: To inspire, motivate, and educate children, adults, families, and communities to take action to be healthy through good nutrition and physical activity.***

	2006	2005	2004
NPA Coalition Meetings	4	6	5
Average Attendance	3.5	5	5

## ACTIVITIES FOR 2006

- COALITION MEMBERS WERE ACTIVELY INVOLVED IN CREATING AND IMPLEMENTING SCHOOL WELLNESS POLICIES FOR SEVERAL SCHOOL DISTRICTS. NUTRITION EDUCATION HANDOUTS AND NEWSLETTERS WERE CREATED AND OFFERED TO SCHOOLS FOR THEM TO UTILIZE AS NEEDED.
- 500 copies of a brochure called "Get Moving...In Polk County!" was distributed throughout Polk County communities.
- Received 1 out of 4 grants that were written. Through the Healthier WI Worksite Wellness grant, the coalition will be partnering with St. Croix Regional Medical Center to develop a wellness program in one local business. Experience and information gained will better support other businesses within the county. The coalition will further promote worksite wellness through distribution of a worksite wellness issues brief. All activities will be carried out in 2007.
- The March of Dimes Wisconsin Chapter has awarded a grant to Polk County Health Department to support Project OPEN (Outreach for Pregnancy Education and Nutrition) at WIC. Project OPEN at WIC is aimed at underserved maternal and child health needs. This project will utilize a social marketing technique of outreaching not only to eligible pregnant women but also their social and healthcare network to encourage early and consistent participation in WIC and other PCHD MCH programs.

# RAISING HEALTHY FAMILIES PROGRAM

## Healthy People 2010 Objectives

- Reduce maltreatment of children
- Increase the proportion of children with special health care needs who have access to a medical home.



The Raising Healthy Families Program provides nursing visits to new parents in the home focusing on basic parenting education, infant care, nutrition, safety, discipline, and normal growth and development. Case management services were provided to 26 children with special health care needs. Referral and follow-up services were provided to 42 children with special health care needs.

<b>PROGRAM STATISTICS</b>	<b>2006</b>	<b>2005</b>	<b>2004</b>
Number Families Served (3 or more visits)	28	25	28
Number Families With Special Health Care Needs Children	17	17	26
Number of Home Visits	178	178	269

## ORAL HEALTH CARE SERVICES

Early childhood caries preventive services included anticipatory guidance for parents and other caregivers on the importance of fluoride in promoting good oral health. Four Polk county school districts participate in a weekly fluoride mouthrinse program: Luck, Unity, Clayton and Frederic.

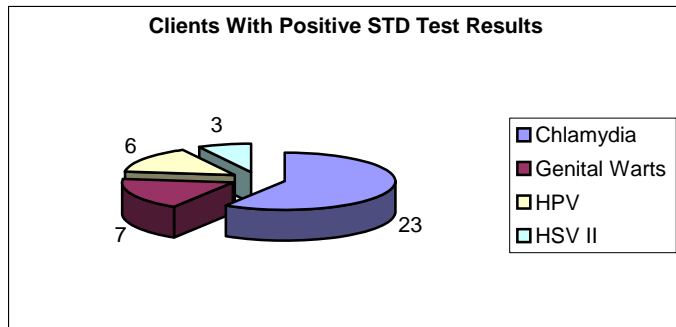
<b>EARLY CHILDHOOD CARIES PREVENTION</b>	<b>2006</b>
Children Screened for the Program	113
Children receiving an oral health assessment	112
Children receiving fluoride varnish	111
Children referred to Dentist	19
<b>FLUORIDE SUPPLEMENT/MOUTHRINSE PROGRAM</b>	<b>2006</b>
Children age 6mos – 16 years receiving fluoride supplements	403
Children participating in weekly fluoride mouth rinsing at school sites	668

# Reproductive Health

**Healthy People 2010 Objective:**

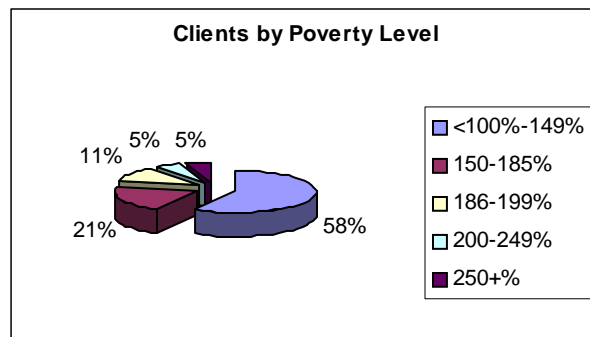
Increase the proportion of females at risk of unintended pregnancy (and their partners) who use contraception.

Program Data Summary	2006	2005	2004
Nursing Visits	2767	2798	2812
Unduplicated Clients	959	981	947
Targeted Clients	525	525	525
Teen Enrollment - % of Caseload	54%	53%	55%
Nurse Practitioner Exams	493	534	565
Pregnancy Tests			
Total Tests all Ages	323	320	347
Teen Tests	118	109	99
Abnormal Pap Tests	48	42	40
ASCUS Pap Smears	32	25	24
Mild Dysplasia	10	13	16
Moderate Dysplasia	5	3	0
HPV Changes on Pap smears	6	8	7
Severe Dysplasia	1	1	0



N=36

Site	Number of Presentations	Number Attending
<b>Schools</b>	6	123
<b>Group Home</b>	1	8
<b>Human Services</b>	3	22



# WISCONSIN WELL WOMAN PROGRAM



## *Healthy 2010 Objectives*

- Reduce the breast cancer death rate
- Reduce the death rate from cancer of the uterine cervix
- Increase the proportion of adults with diabetes whose condition has been diagnosed
- Increase the proportion of persons who have a specific source of ongoing care

The Wisconsin Women's Cancer Control Program is a statewide program funded by the Center for Disease Control that provides free health services to low income, uninsured or underinsured women age 35-64. Services can include:

- Breast and cervical cancer screening (yearly breast exam, pelvic exam, pap test and mammogram)

Due to state funding restrictions, the following health services were available only for the first half of 2006:

- Diabetes screening
- Blood Pressure screening
- Cholesterol Screening

All Polk County medical clinics, hospitals, and radiologists participate in the program. This enables women to see their own physicians.

Statistics	2006	2005	2004
Total number enrolled	153	193	230
Number new this year (age 40+)	34	50	65
Number with abnormal breast screenings	18	17	11
Number with abnormal pelvic/pap tests	8	7	5
Number diagnosed with breast cancer	0	1	0
Number diagnosed with cervical/uterine cancer	0	0	0

Women enroll through the Health Department as well as through local hospitals and medical clinics. The program coordinator works with local clinics and hospitals on reporting and billing issues, follows up on screening results, assists women in securing funding for additional testing and treatment, and informs women about the program through the news media and public presentations to community groups.

# Adult Health

## *Healthy People 2010 Objectives*

- Increase the proportion of adults who are vaccinated annually against influenza and ever vaccinated against pneumococcal disease.
- Reduce Hepatitis B
- Increase the proportion of persons appropriately counseled about health behaviors
- Reduce Tuberculosis

## Flu Vaccine Clinics

The A/New Caledonia/20/99 (H1N1), A/Wisconsin/67/2005 (H3N2), B/Malaysia/2506/2004 vaccine was provided through the Medicare benefit to senior citizens, and at low cost to other citizens and persons in a high-risk category.

Year	# Flu Shots Given	# Pneumonia Shots Given
2006	1669	44
2005	2433	108
2004	1690	69

## Multi-Purpose Family Health Clinics

Each Thursday the Health Department offers "Walk-In" hours for immunizations, blood pressure checks, hearing tests, and other health-related counseling.

Year	Number of Clinic Visits
2006	194
2005	320
2004	262

## Adult Hepatitis B

The Health Department assisted schools, local EMS services and other employers with administration of Hepatitis B vaccine in order to meet the OSHA Bloodborne Pathogen Standard.

Year	Number of Hepatitis B shots given
2006	63
2005	77
2004	73

## Mantoux Test

The Health Department offers Mantoux skin testing for tuberculosis to employees needing such for employment requirements.

Year	Number Adults Served
2006	229
2005	173
2004	235

# HEALTH BENEFITS COUNSELING

## *Healthy People 2010 Objectives*

- Increase the proportion of persons with health insurance
- Increase the proportion of persons who have a specific source of ongoing care
- Reduce the proportion of families that experience difficulties or delays in obtaining health care or do not receive needed care of one or more family members

Family health benefits counseling is provided to assist Polk County families in accessing health care financing through counseling and advocacy. Outreach about public benefits is an integral part of this service and occurs in many settings including the home, community, Health Department and private medical clinics. In 2006, 321 hours were spent on Healthy Start and other Medicaid program outreach.

### Benefits Counseling Data Summary 2003-2005

	2006	2005	2004
Number Persons Served	122	141	145
Adults	87	110	105
Children	35	31	40

Areas of Assistance	Number of Clients Served	Number of Provider Contacts
<b>Public Benefits</b> – SSI/MA, Badger Care, Medically Needy, Healthy Start, Family Planning Waiver, Judicare	97	
<b>Insurance, HMO's</b> – Termination/Denial of coverage; referrals/authorizations; claims; policy coverage and insurance increases; uninsured	5	
<b>Medical Debt</b> – payment problems, collections, denial of services due to debt	0	
<b>Outreach to Special Populations</b> – Homeless; parents of newborns; medical clinic clients	242	
Well Woman Program Billing Support		114
Well Woman Program Clinical Support		65

# PRENATAL CARE COORDINATION



## *Healthy People 2010 Objectives*

- Reduce fetal and infant deaths
- Increase the proportion of pregnant women who receive early and adequate prenatal care
- Reduce preterm births

Prenatal Care Coordination (PNCC) Services are available to Medicaid-eligible pregnant women with a high-risk for adverse pregnancy outcomes. High-risk pregnancies require additional prenatal care services, coordination, and follow up because of medical or non-medical factors that include psychosocial, behavioral, environmental and nutritional factors.

A risk assessment is completed by all Polk County pregnant women who are applying for WIC benefits. Additional referrals come from physicians and social workers. In 2006, 183 pregnant women were assessed, 132 were eligible for the program, 107 new women participated and 73 women continued in the program from 2005. Non-Medicaid women are offered PNCC equivalent services by the Health Department free of charge and received 264 visits in 2006.

Prenatal care coordination services are billable for non-medical interventions, coordination and education. Each participant's total service is limited to \$887 per pregnancy.

	2006	2005	2004
Number Enrolled in PNCC	180	183	158
Average nursing visits/participant	5.3	5.5	5.7
Average registered dietician visits/participant	2.8	2.9	2.2
TOTAL: Nursing Visits	962	1150	1269
Registered Dietician Visits	520	440	365
Average billable service per participant	\$332.94	\$240.78	\$357.23
Average billable service per woman assessed and/or participating in PNCC services	\$292.34	\$177.67	\$279.42

# JAIL HEALTH

## *Healthy People 2010 Objective*

- **Increase the proportion of persons who have a specific source of ongoing care**

The Jail Health Program is a cooperative and coordinated effort by: 1) the Polk County Health Department; 2) a physician representing the Polk County Medical Society; 3) the county sheriff, and; 4) the jail staff. The goal is to assure that each prisoner has access to adequate medical care. This includes emergency treatment for life-threatening conditions and the evaluation and treatment of ongoing daily health needs. Mantoux testing is conducted annually on all jail staff. The jail nurse also works with the Sheriff's Department on Bloodborne Pathogen training. Nursing time spent on jail health and visits to inmates focuses on sick call assessment and care, medication management, as well as case management for psychiatric, medical and dental referrals.

<b>Nursing Activity</b>	<b>2006</b>	<b>2005</b>	<b>2004</b>
Sick Call (in house)	1377	1515	1167
Physical Exams	13	16	23
Inmate Mantoux	229	227	128
Inmate Health Histories	882	1067	974
M.D. Consults	83	139	136
Dental Consults	0	7	14
Psychiatric Consults	150	239	425
Other Consults	27	48	66
Referrals to Outside Providers:			
Emergency Room	54	30	20
M.D.	37	77	41
Dentist	8	19	18
Psychiatric	147	242	377
Medication Set-Up Hours	163	183	181
Inmates Receiving Med Set-Up	1408	2260	1765
Number Meds Set-Up	3298	5736	4614
<b>Total Hours of Service – RN</b>	<b>1757</b>	<b>1663</b>	<b>1669</b>
<b>LPN</b>	<b>745</b>	<b>768</b>	<b>252</b>

## COMMUNICABLE DISEASE PROGRAM

<b>Most frequently reported communicable diseases in Polk County, 2002-2006</b>						
Disease/Year	2006	2005	2004	2003	2002	5 year average
<b>Pertussis</b>	0	14	41	0	0	11
<b>Chlamydia</b>	60	49	64	72	50	59
<b>Gonorrhea</b>	7	6	6	4	5	6
<b>Genital Herpes</b>	6	8	12	8	13	9
<b>Campylobacteriosis</b>	8	9	6	4	14	8
<b>Ehrlichiosis</b>	15	10	6	2	0	7
<b>Giardiasis</b>	2	6	4	3	3	4
<b>Invasive Disease, Bacterial</b>	3	8	8	4	2	5
<b>Lyme Disease</b>	44	35	26	17	49	34

<b>All Communicable Diseases with one or more reported cases in 2006</b>						
Disease/Year	2006	2005	2004	2003	2002	5 year average
<b>Pertussis</b>	0	14	41	0	0	11
<b>Chlamydia</b>	60	49	64	72	50	59
<b>Gonorrhea</b>	7	6	6	4	5	6
<b>Syphilis, early latent</b>	0	1	0	0	0	0
<b>Genital Herpes</b>	6	8	12	8	13	9
<b>Arboviral Infections</b>	0	1	1	0	1	1
<b>Campylobacteriosis</b>	8	9	6	4	14	8
<b>Cryptosporidiosis</b>	3	1	8	3	6	4
<b>E_ coli O157:H7</b>	0	2	0	3	4	2
<b>E_ coli non-O157:H7</b>	3	2	2	0	0	1
<b>Ehrlichiosis</b>	15	10	6	2	0	7
<b>Giardiasis</b>	2	6	4	3	3	4
<b>Hepatitis B</b>	1	0	1	2	13	3
<b>Hepatitis C</b>	4	3	5	9	16	7
<b>Invasive Disease, Bacterial<sup>1</sup></b>	3	8	8	4	2	5
<b>Kawasaki Disease</b>	2	0	0	0	0	0
<b>Lyme Disease</b>	44	35	26	17	49	34
<b>Mumps</b>	3	0	0	0	0	1
<b>Meningitis<sup>2</sup></b>	2	1	0	1	0	1
<b>Salmonellosis</b>	1	1	7	7	8	5
<b>TOTAL</b>	<b>163</b>	<b>156</b>	<b>190</b>	<b>132</b>	<b>176</b>	<b>163</b>

Notes: <sup>1</sup>Invasive Disease includes streptococcal group A and B and streptococcus pneumoniae. <sup>2</sup>The reported cases of meningitis did not include any cases of neisseria meningitidis.

# Tobacco Control & Prevention Program



In 2006, a Multi-Year Action Plan was developed by the Polk County Tobacco-Free Coalition to address three priority areas:

## REDUCE YOUTH TOBACCO USE

- Under the Wisconsin WINS program, 187 tobacco compliance investigations were completed in 2006. There were 10 citations for sales of tobacco products to minors. Polk County's non-compliance rate was 5.3%, which is lower than the Wisconsin state.
- A Through with Chew Campaign educational program was conducted in 5 school districts with over 1400 students served.
- Polk County FACT members hosted an anti-tobacco advocacy lounge event at Unity High School during a multi-county music event – over 600 students attended
- Students at Amery and Unity participated in the Great American Smokeout by creating placemats for restaurants.
- FACT students conducted radio interviews on Kick Butts Day as well as other tobacco educational events at local schools.

## TOBACCO CESSATION

- The agency First Breath Program smoking cessation program for pregnant women had 82 participants.
- In partnership with local newspapers, information regarding who to contact in Polk County for cessation information has been publicized and published monthly.
- The Wisconsin Quit Line video was shown hourly at all WIC office clinics.
- The Health Department hosted a Not On Tobacco (NOT) youth facilitation training for western Wisconsin on August 3. Thirteen adults attended.

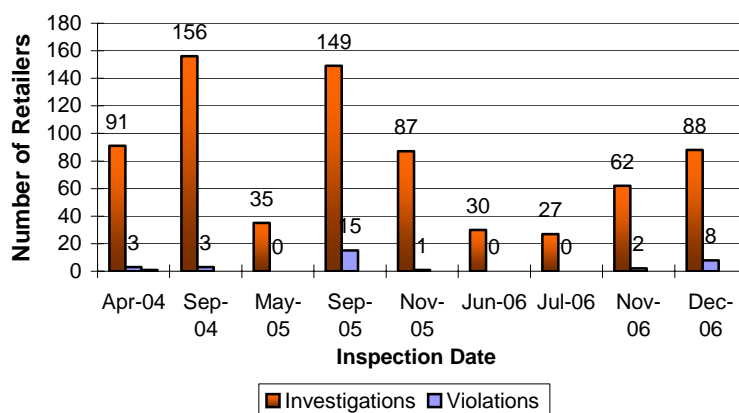
## Mission:

TO PROMOTE A TOBACCO-FREE POLK COUNTY.

## GOALS:

- 1) TO PREVENT YOUTH INITIATION OF TOBACCO PRODUCTS.
- 2) TO PROMOTE TOBACCO CESSATION IN POPULATIONS USING TOBACCO PRODUCTS.
- 3) TO ELIMINATE ENVIRONMENTAL TOBACCO SMOKE (ETS) EXPOSURE.

### Polk County Tobacco Retailer Compliance



## INCREASE CLEAN AIR

- Five more Polk County municipalities voluntarily adopted new or improved smoke-free policies.
- The Polk County Health Department developed a "fill-in-the-blank" smoke-free policy template and forwarded it to municipalities desiring to consider implementing or updating their current smoke-free or tobacco-free policies. The template has also been added to the Tobacco Control Resource Center for Wisconsin website, so that it may be utilized statewide.

# Public Health Emergency Preparedness



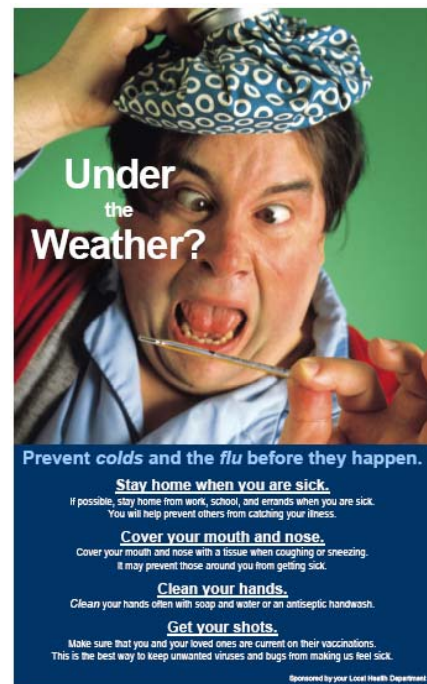
100 Polk County Plaza, Suite 180  
Balsam Lake, WI 54810  
Tel: (715)485-8800  
Fax: (715)485-9116  
www.co.polk.wi.us/wrpphp

**WRPPHP Mission:** The mission of the Western Region Partnership for Public Health Preparedness is to protect the health and safety of the citizens living in the jurisdictions of the member agencies; and to promote the professional development of its individual and organizational members in terms of public health emergency preparedness.

**Member Agencies:** Barron County Health and Human Services Department, Chippewa County Department of Public Health, Dunn County Health Department, Eau Claire City-County Health Department, Pepin County Health Department, Pierce County Health Department, Polk County Health Department (fiscal agent), Rusk County Department of Health and Human Services, St. Croix County Department of Health and Human Services. New partners in 2007: Clark County Health Department, Burnett County Department of Health and Human Services, and the St. Croix Tribal Health Department.

## 2006 Highlights

1. Joint Functional Exercise with local hospitals on the Interim Pharmaceutical Stockpile Plan to administer prophylactic medications to emergency responders and their family members within 4 hours.
2. Continuation of planning efforts with colleagues from local and state public health agencies in Minnesota.
3. Development and implementation of a School Surveillance Program to help identify potential outbreaks in a school setting. Originated from Eau Claire County, this program has been modified and updated for all member agencies to use.
4. Development and implementation of a Special Populations Plan for Public Health Emergencies and Disasters along with an on-line registry occurred in Polk County. The registry is for individuals with severe health and medical needs to voluntarily register with the program so the emergency response community has a better awareness of special populations and their needs during an emergency.
5. Development and implementation of a Mortuary Plan for Pandemic Influenza occurred in Barron County and will be implemented with all member agencies in 2007.
6. Development and implementation of the Public Health Pandemic Influenza Response Plan.
7. Series of tabletop and functional pandemic influenza exercises with key community partners.
8. Additional training in Incident Command Systems, Respiratory Protection, Pandemic Influenza, Health Alert Network, Command Caller, Volunteer Education and Outreach and the Role of the Public Information Officer.
9. Developed and distributed 1,300 posters, 420 - 4 ounce bottles of hand sanitizer, 218 - 21ounce bottles of hand sanitizer, 401 boxes of Kleenex, 3200 temperature dots, and 12,300 antimicrobial wipes as part of the *Under the Weather Campaign* to schools, daycares, nursing homes and other businesses.



# HOME CARE PROGRAM

## Healthy People 2010 Objective

- Increase the proportion of persons with long-term care needs who have access to the continuum of long-term care services

The Polk County Home Care Program has provided skilled nursing and personal care services to residents of Polk County since 1967. All services are provided in the home setting and under

physician's orders. The agency is Medicare certified and State licensed. The agency serves all persons eligible for home care services regardless of ability to pay for care.

In 2006, the Home Care program experienced a decrease in the number of referrals and in the number of unduplicated patients. Personal visits decreased due to loss of several long-term clients. The average patient census per month also decreased 22%.

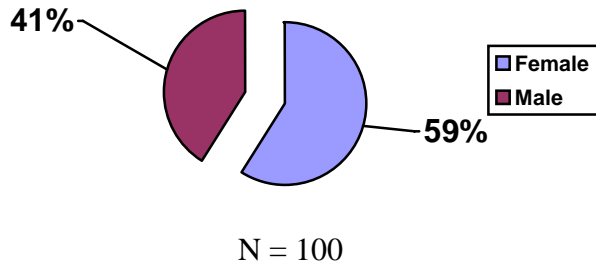


<b>Overview of Program Statistics</b>				
<b>STATISTIC</b>	<b>2006</b>	<b>2005</b>	<b>2004</b>	<b>% Changed 2003- 2004</b>
REFERRALS	314	330	315	-4.9%
Total Served (Unduplicated)	333	348	343	-4.3%
Annual Admissions	259	290	277	-10.7%
Average Patient Census/Month	112	143	135	-21.7%
Average Patients Served/Month	135	164	152	-17.7%
Number Skilled Visits	6,099	6,140	6,721	-.7%
Number Personal Care Visits	3,326	4,190	5,046	-20.6%
Average Number Visits/ Patient	28.3	29.7	34.4	-4.7%

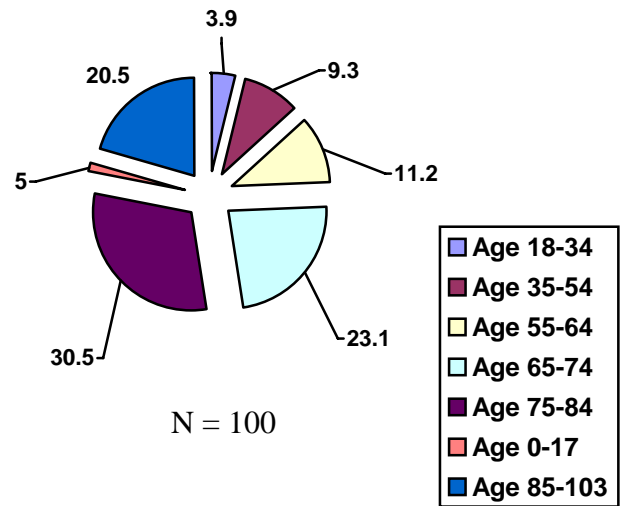
# Home Care Program Statistics

The Polk County Home Care Program provides intermittent care to homebound patients needing skilled nursing, home health aide, physical, occupational and speech therapy services. The program also provides personal care services to clients needing assistance with activities of daily living.

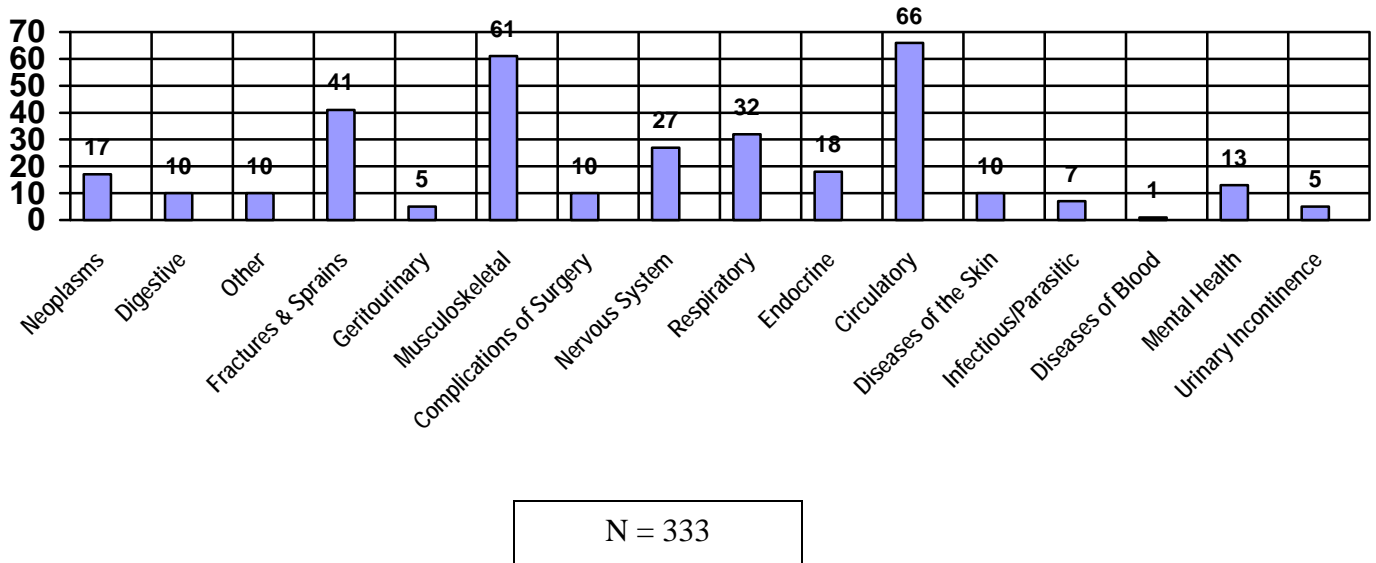
Percent of Visits by Sex



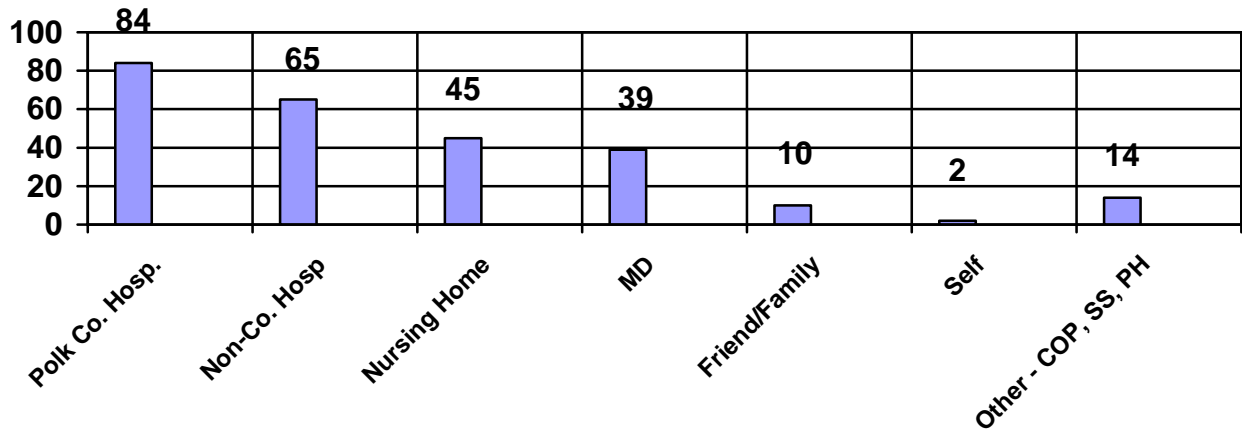
Percent of Admits by Age



Number of Patients by Disease Category

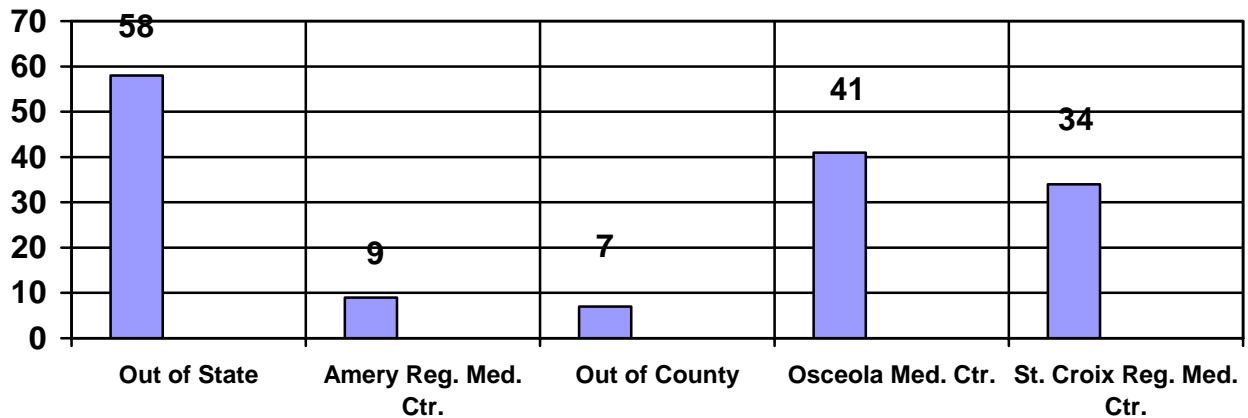


### 2006 Admissions by Referral Source



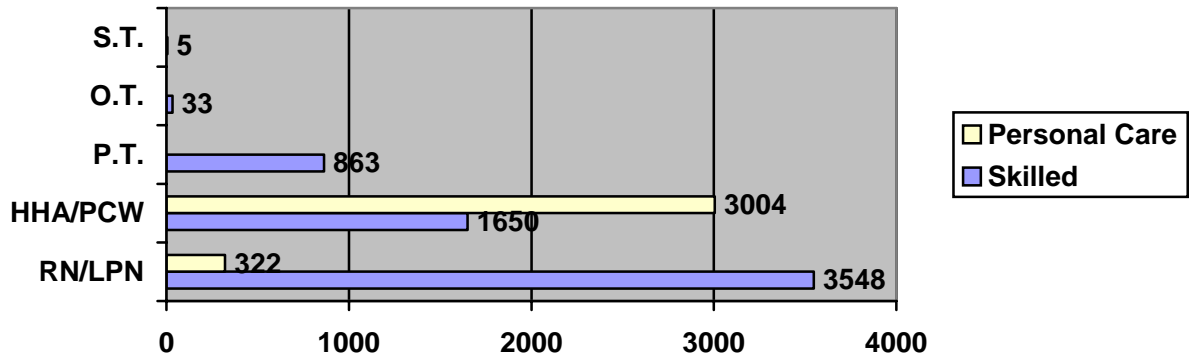
**2006 Admissions and Readmissions = 259**

### 2006 Admissions by Referring Hospital



## 2006 Home Care Program

### Visits By Discipline

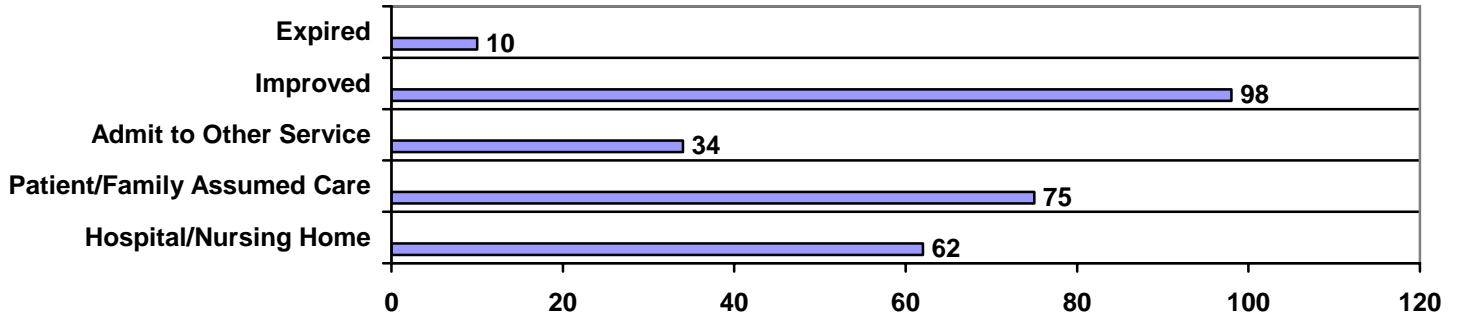


### NUMBER OF BILLED AND NON-BILLED VISITS

TYPE OF VISIT	Number of Visits	Percent of Visits
Non-Bill Med Set-Up	62	0.6
Non-Bill Evaluation	51	0.5
Non-Bill OASIS	28	0.3
Non-Bill Supervisory	134	1.4
Charged Supervisory	217	2.3
Charged Med Set-Up	579	6.1
Charged Personal Care	3,004	31.9
Charged Skilled	5,350	56.9
<b>Total Visits</b>	<b>9,425</b>	<b>100</b>

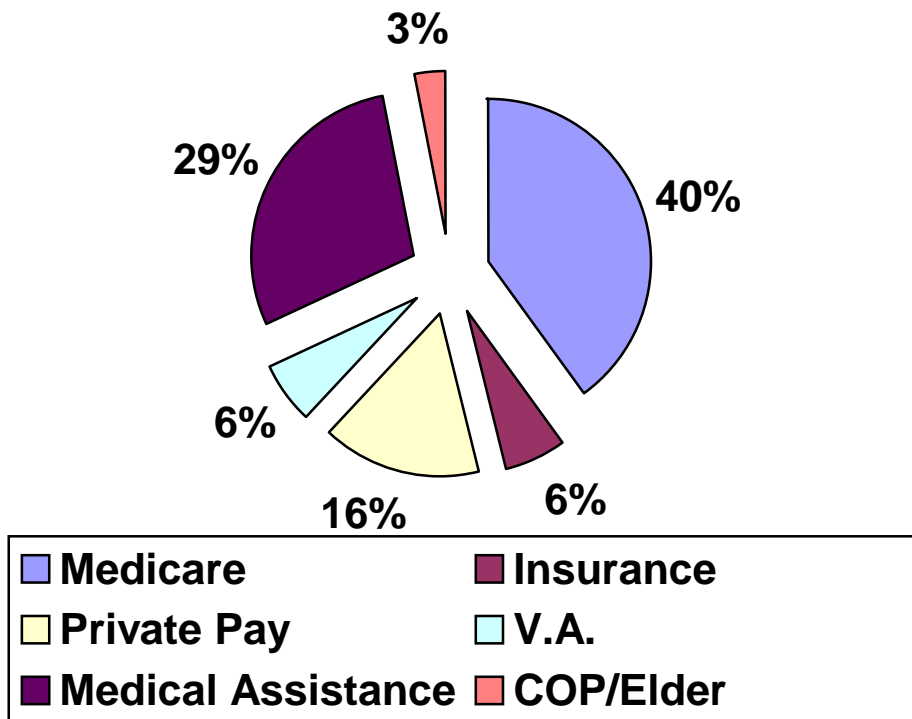
**Average visits/patient =28.3 (29.7 in 2005)**

### Discharge From Service By Disposition



N = 279

### Annual Census Distribution Percent of Clients By Funding Source



# 2006 Financial Statement

## Polk County Health Department

Expenses	2006	2005	2004
Salaries	\$1,893,326.03	\$1,832,593.30	\$1,805,564.43
Fringe	\$790,130.25	\$774,543.36	\$747,701.71
Transportation	\$101,332.57	\$106,461.09	\$104,614.04
Contract Services	\$479,234.66	\$431,325.78	\$501,288.57
Medical Supplies/Vaccine	\$97,222.45	\$79,399.28	\$75,892.11
Operating Expenses	\$307,864.36	\$258,705.31	\$223,420.83
<b>Total Expenses</b>	<b>\$3,669,110.32</b>	<b>\$3,483,028.12</b>	<b>\$3,458,481.69</b>
<b>Revenues</b>			
Home Care - Med/MA/Ins/PP	\$803,429.14	\$917,835.37	\$972,838.09
Medicaid Case Management	\$75,656.24	\$81,140.02	\$67,817.02
Immunization, Flu, & Hep B	\$43,172.80	\$53,946.70	\$26,342.04
State Grants	\$1,128,116.00	\$1,044,959.54	\$1,081,062.96
Reproductive Health Services Program Income	\$137,549.46	\$134,094.59	\$106,765.98
Agent License Fees	\$61,590.40	\$57,893.00	\$57,860.00
Jail Health Contract	\$85,337.50	\$82,789.50	\$66,737.10
PHN Home Visits	\$2,015.00	\$2,080.12	\$3,820.24
PH Contracts - DSS, ABC, CSHCN, UW	\$61,097.50	\$12,219.44	\$10,583.81
Mini-grants & Donations	\$3,135.52	\$24,995.00	\$20,077.00
Immunization Donations	\$666.50	\$641.71	\$1,287.89
Sales, Rentals of Supplies/Kits, Car seats	\$7,953.12	\$6,371.34	\$6,785.80
County Allocation	\$1,259,391.14	\$1,064,061.79	\$1,036,503.76
<b>Total Revenues</b>	<b>\$3,669,110.32</b>	<b>\$3,483,028.12</b>	<b>\$3,458,481.69</b>